

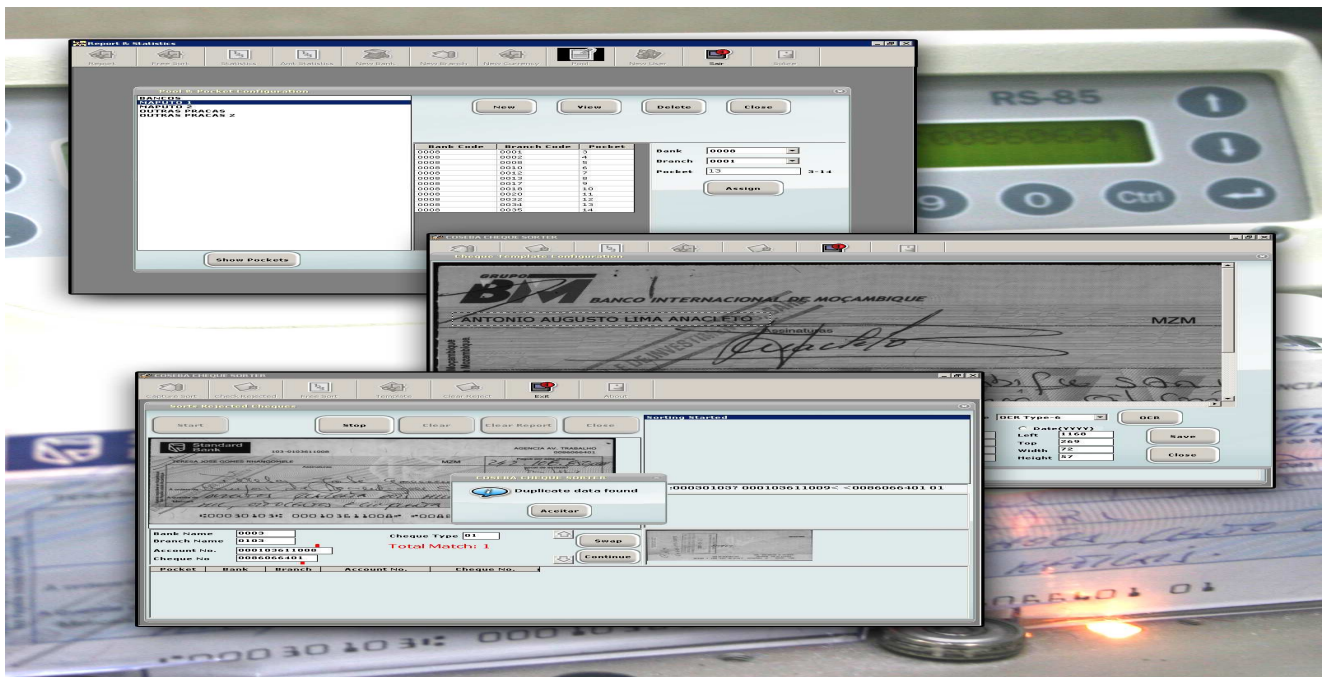


international

## Cheque Verification (Front office)

## > Introduction

The introduction of a new state-of-the-art cheque reading and sorting software based on the DCC Teller Scan TS215/ScanT230 Cheque scanner. **The application main objective is the Authentication of the cheque by verifying the encrypted data inside the two dimensional barcode printed during cheque personalization, against the MICR on the cheque MICR code area.** In addition, the application will also improve the readability and speed of cheque image capture as well as better control and auditing of daily cheque input. The images can be shared centrally or emailed directly from the system using existing emailing system already exist in the bank network. The interface can be presented in English or Swahili language with user manual and easy to use graphic user interface.

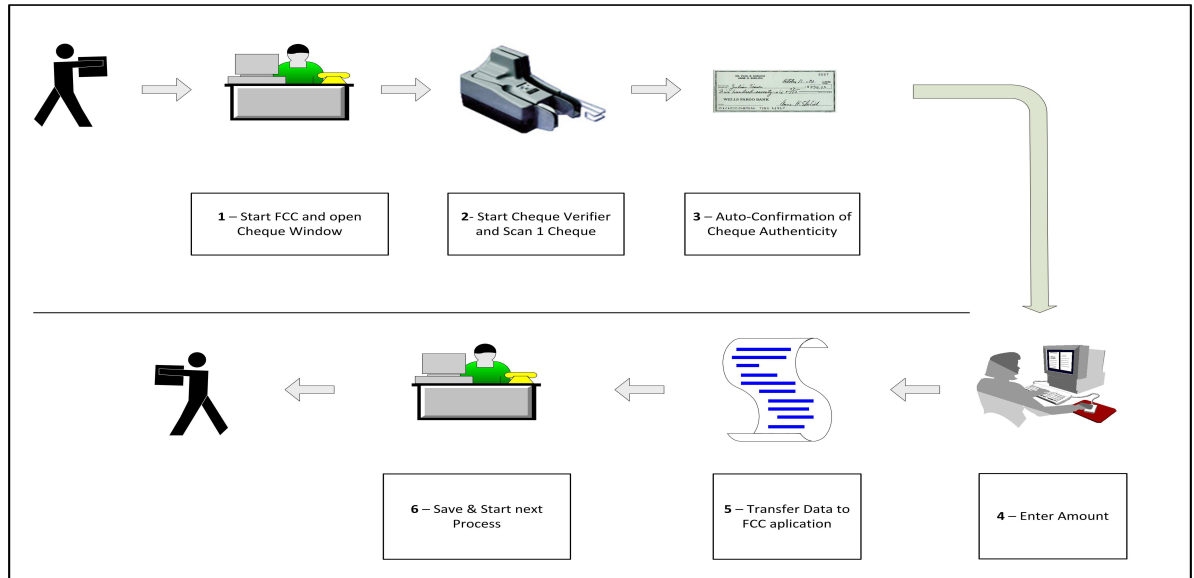


## > Software Componentes

1. Work in WinXP pro or Win2000 windows Operating System and developed on .NET development environment.
2. Multi user, multi station operation, with capture and validation at the same time.

3. Compatible with any future currency and new cheque regulation by the central bank
4. Capture back and front image of the cheque.
5. Fast and accurate readability of the MICR font .
6. Read the MICR area of the check and extract the Magnetic line data with the standard check sum digits.
7. Use OCR technology to Auto correct the MICR output.
8. Read pre defined areas like account holders name, currency, and other information specified by the bank using OCR technology.
9. Separate Validation that allows better control, user correction and the introduction of cheque value and beneficiary name.
10. Auto validation for the new check sum.
11. Compress and save both front and back images in specified location and the information extracted into the database and makes it available for future use.
12. Create various reports including security reports, logs and quantities of cheques processed across any period of time.
13. Administration tool to control users and logins for the application, with different access level to functionalities and reports, depending on user login
14. Direct email from the system with auto attachment of the cheque image to share between different branches when needed to be.
15. Optional SMS on real time for the client indicating the arrival of his/ her cheque at the bank front office with information such as the amount and the beneficiary name..
16. Email real time including the image of the cheque to the client email address indicating the arrival of his/ her cheque at the front office with information such as the amount and the beneficiary name.

## > Front Office Work Flow



## > Hardware and Software Components

Description
Cheque reader – Digital Cheque TellerScan TS 215
Software Application ADEC ( <i>Cheque Verifier</i> ) – central License
Scanner Software application for end user (post/ cashier) – license/ year

# **Back Office Cheque Compensation Pro**

## **> Introduction**

---

The back office compensation system with cheque machine reading software is based on the Digital Cheque Teller Scan TS230 Cheque scanner. **The application main objective is improvement of efficiency in the back office and the creation of an electronic compensation file for both daily home bank cheque and daily other Banks cheque.** The system also includes transfer order management tools. In addition, the application will also improve the data input as it becomes full machine dependable, reducing human errors and mistake, reduce the operation time dramatically and improve the readability and speed of cheque image capture as well as better control and auditing of daily cheque input. The images can be shared centrally or emailed directly from the system using existing emailing system in the bank network. The interface can be presented in English or Swahili language with user manual and easy to use graphic user interface.

## **> Software Components**

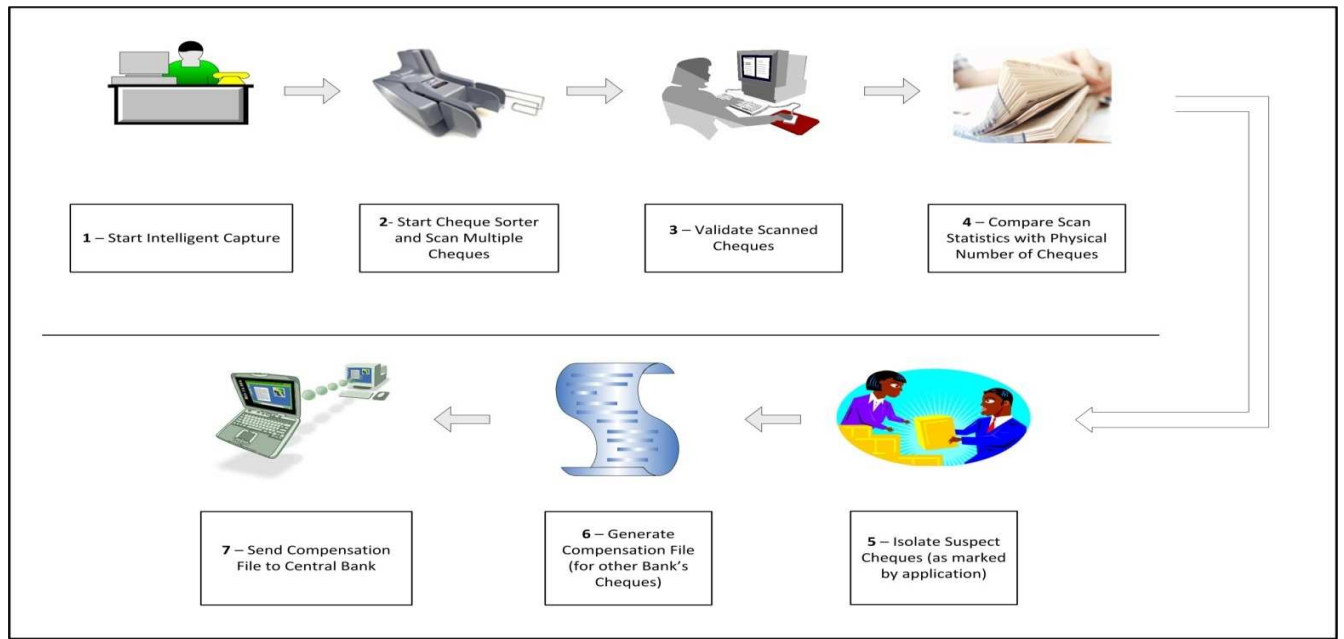
---

1. Work in WinXP pro or Win2000 windows Operating System and developed on .NET development environment.
2. Client-server Architecture with Multi user, multi station operation, with capture and validation at the same time.
3. Compatible with any future currency and new cheque regulation by the central bank. Fully configurable for the addition of new banks, branches and currencies
4. Capture back and front image of the cheque.
5. Fast and accurate readability of the MICR font.
6. Use OCR technology to Auto correct the MICR output by using an automatic intelligent capture.
7. Separate Validation that allows better control, user correction and the introduction of cheque value and beneficiary name.
8. Generate a compensation electronic file including the full input in a format specified by the Client
9. Create various reports including security reports, logs and quantities of cheque processed across any period of time.
10. Administration tool to control users and logins for the application, with different access level to functionalities and reports, depending on user login



11. Direct email from the system with auto attachment of the cheque image to share between different branches when needed to be.

### > Back Office work flow



### > Hardware and Software Components

Description
Cheque reader – Digital Cheque TellerScan TS 230
Software Application CompensationPro ( <i>Compensation back office</i> ) – central License
Scanner Software application for end user (post/ cashier) – license/ year

## **>References:**

---

The following banks are currently using our cheque software applications;

**FBME, Tanzania**

**Commercial Bank of Africa, Tanzania**

**Standard Chartered Bank, Tanzania**

**Banco Bai, Angola**

**Standard Bank, Moçambique**

**First National Bank, Moçambique**

**Banco ProCredito, Moçambique**

**Banco Socremo, Moçambique**

**BOA Bank, Tanzania**

**BancABC, Tanzania**

**BCI Foemento, Moçambique**

**Millennium BIM, Moçambique**

**CCC, Moçambique**

**ICB, Moçambique**

**ABC, Moçambique**

Our contacts are as follows:

**BOSS LIMITED**

**Nyerere Road, 22**

**Darworth Building**

**Tel: (022) 2127697/98**

**Fax:(022) 2862364**

**E-mail: [boss@boss.co.tz](mailto:boss@boss.co.tz)  
[boss@brithol.com](mailto:boss@brithol.com)**

